

PROPOSED REVISED PRELIMINARY PLAT OF  
 LOTS 1-25 OF BLOCK 1, LOTS 1-38 OF BLOCK 2,  
 LOTS 1-8 OF BLOCK 3 AND LOTS 1-4 OF BLOCK 4 OF  
**WILD TURKEY ESTATES**  
 A SUBDIVISION OF TRACT A OF WILD TURKEY ESTATES

LOCATED IN:  
 GOVERNMENT LOTS 1 & 2, S1/2 NE1/4, N1/2 SE1/4 AND SE1/4 SE1/4 OF SECTION 1, T6N, R1E, BHM;  
 GOVERNMENT LOT 4 OF SECTION 31, T7N, R2E, BHM;  
 GOVERNMENT LOTS 3, 4, 5 & 6, SE1/4 NW1/4, NE1/4 SW1/4 OF SECTION 6, T6N, R2E, BHM  
 TRACT A OF PINE OAK SUBDIVISION IN THE S1/2 SW1/4 OF SECTION 6, T6N, R2E, BHM  
 LAWRENCE COUNTY, SOUTH DAKOTA

NOVEMBER, 2008

CURRENT ZONING: P-F (EXCEPT SE1/4SE1/4 SEC. 1 WHICH IS A-2)  
 POSTAL AREA: SPEARFISH 57783  
 SCHOOL DISTRICT: SPEARFISH  
 ADJACENT OWNERS: SHOWN IN PARENTHESES  
 CONTOUR LINES: AERIAL SURVEY BY HORIZONS, INC. AND NJS ENGINEERING  
 FLOOD ZONE: NONE INDICATED ON COMMUNITY-PANELS:  
 480094-00838  
 480094-00758  
 480048-0004E  
 480048-0001D  
 DATE PREPARED: OCTOBER 2, 2007

**OWNER/DEVELOPER**

MJG, Inc.  
 365 Hayes Creek Road  
 Hamilton, MT 59840

**PREPARED BY**

NJS Engineering  
 123 E. Jackson Blvd.  
 Spearfish, SD 57783

**AREA SUMMARY**

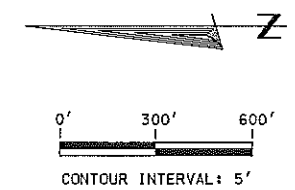
RIGHT-OF-WAY: 24.28 ACRES  
 OPEN SPACE LOTS (2): 69.84 ACRES  
 RESIDENTIAL LOTS (73): 302.82 ACRES  
 TOTAL SUBDIVISION AREA: 386.92 ACRES

**CORNER LEGEND**

○ 45 REBAR #4/ALUM CAP (LS 3328) SET THIS SURVEY OR IN PREVIOUS SURVEY  
 ● FOUND CORNER MONUMENT AS NOTED

**NOTES:**

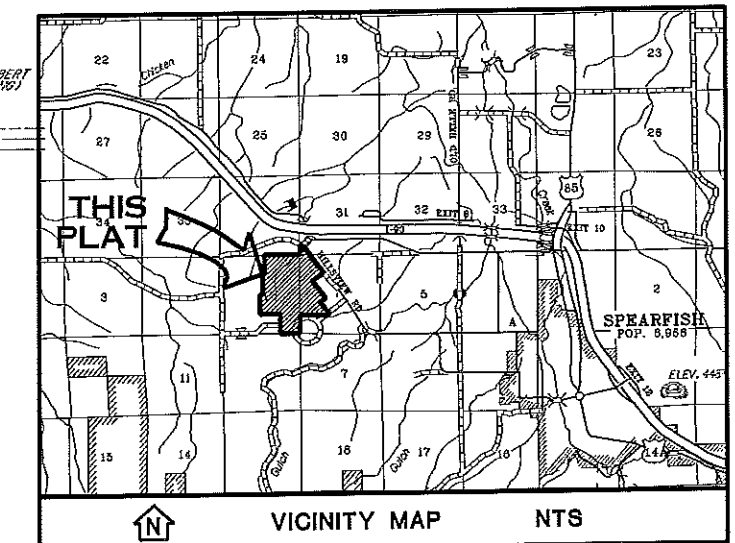
- ALL ROAD RIGHTS-OF-WAY SHOWN HEREON ARE 60' IN WIDTH AND CUL-DE-SACS HAVE A 70' RADIUS. THESE ROADS ARE ALSO TO FUNCTION AS UTILITY EASEMENTS AND ARE DEDICATED TO PUBLIC USE.
- 5' UTILITY EASEMENTS ARE ALONG THE FRONT AND REAR LOT LINES AND ON BOTH SIDES OF SIDE LOT LINES.
- ELECTRICAL LINES ARE PLANNED TO BE UNDERGROUND.



LINE	BEARING	DISTANCE
L1	N 89°54'49" W	419.91
L2	S 89°48'47" W	136.28
L3	N 66°06'18" W	56.94
L4	S 62°52'44" W	54.85
L5	N 88°10'31" W	371.28
L6	N 88°14'52" W	209.93
L7	S 78°16'19" W	69.03

CURVE	ARC	DELTA	RADIUS
C1	93.64	00°11'06"	29000.00



APPROVAL BY LAWRENCE COUNTY PLANNING COMMISSION

Approved by the Lawrence County Planning Commission  
 this \_\_\_\_\_ day of \_\_\_\_\_, 2009.

Signed: \_\_\_\_\_  
 Chairman Secretary

RESOLUTION OF LAWRENCE COUNTY COMMISSION

This preliminary plat is hereby approved by the Lawrence County Board of Commissioners this \_\_\_\_\_ day of \_\_\_\_\_, 2009.

Signed: \_\_\_\_\_  
 Chairman Secretary

\* PROPOSED LOT REVISIONS

P.O. BOX 228  
 123 E. JACKSON BLVD. SUITE 1  
 SPEARFISH, SD 57783  
 WWW.NJSENGINEERING.COM  
 TELEPHONE: (605) 642-4772  
 FAX: (605) 642-4773